

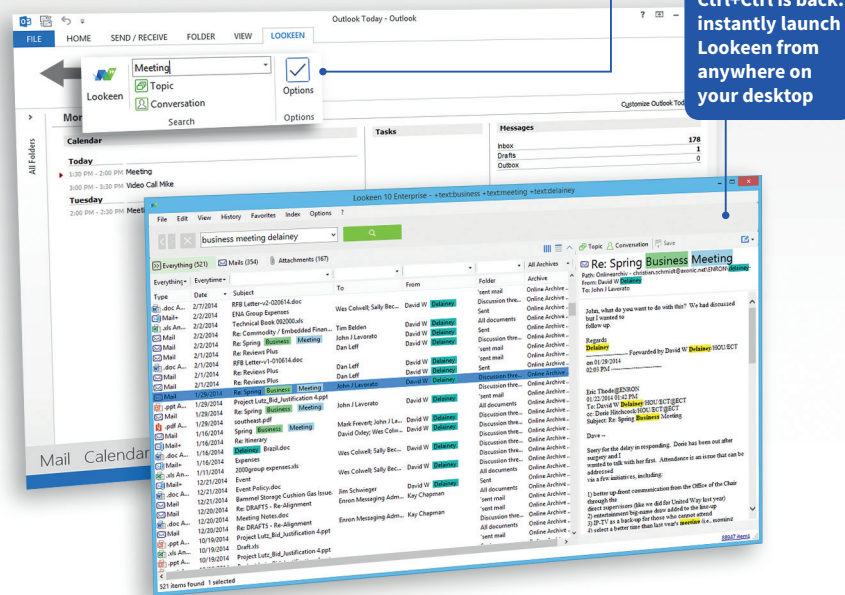
Lookeen Desktop Search



Find your files faster!

Save time by simultaneously searching for documents on your hard drive, in file servers and the network. Lookeen can also search Outlook archives, the Exchange Server and Public Folders. Advanced filters and wildcard options make search more powerful. With Lookeen you'll turn 'search' into 'find'. You'll be able to manage and organize large amounts of data efficiently. Employees will save valuable time usually spent searching to work on more important tasks.

The search tool for Windows 10, 8, 7 and Vista



Features

- ✓ Desktop search software compatible with Windows 10, 8, 7 and Vista
- ✓ Optional add-in to Microsoft Outlook 2016, 2013, 2010, 2007 or 2003 and Office 365
- ✓ Automatic indexing of all files on the hard drive, network, file servers, Outlook PST/OST-archives, Public Folders and the Exchange Server in both cached and uncached modes
- ✓ Easy access via desktop shortcut, system tray or ctrl + ctrl shortcut
- ✓ Multiple file formats supported: .pdf, .docx, .xlsm, .pptx and many more
- ✓ All Outlook data supported: emails, email attachments, appointments, tasks, notes and contacts
- ✓ Advanced search queries using filters, wildcards and more (i.e. date ranges/ From:/ To:/*/~/(AND))
- ✓ Boolean and proximity search supported
- ✓ Powerful search in virtual environments like Citrix and VMware
- ✓ Simple, user friendly interface gives users a unified view over multiple data sources
- ✓ Clear presentation of search results
- ✓ Full fidelity preview option
- ✓ Highlighting of key words
- ✓ Multi row preview
- ✓ All data stored on your safe and secure company servers
- ✓ Lucene 3.0 engine integration
- ✓ Easy on system resources
- ✓ Easy installation & ready to use in a few hours
- ✓ Available in English and German

User Benefits

Search with fast and reliable Lookeen technology

Find your information in record time thanks to real-time indexing

Search your desktop, Outlook files and Exchange folders simultaneously

Edit and save changes to documents in Lookeen preview

Save and re-use favorite queries and access them with short keys

View all correspondence with individuals or groups at the push of a button

Create one-click summaries of email correspondences

Start saving time and money immediately

For Companies

Business Edition

Compatible with standard and virtual desktops like Citrix, VMware and Terminal Servers. Simplified roll out through extensive group directives and ADM files.

Enterprise Edition

Scans additional external indexes. Connects to the separately available Lookeen Server (visit www.lookeen-server.com for more info). Compatible with standard and virtual desktops like Citrix, VMware and Terminal Servers. Simplified roll out through extensive group directives and ADM files.

www.lookeen.com

SYSTEM REQUIREMENTS: IBM or a compatible Pentium® (700 MHz or higher), 512 MB RAM or higher, 100 MB hard disk space for installation, SVGA 800x600 with 256 colours (1024 x 768 with 16-Bit is recommended). Windows 10, Windows 8, Windows 7 or Microsoft Windows® Vista / .NET Framework 4.0 or higher.

SUPPORTED SOFTWARE: Microsoft Outlook 2016 / 2013 / 2010 / 2007 / 2003, Microsoft Office 365, Microsoft Exchange Server 2013 / 2010 / 2007 / 2003.